

Gillspeed Bulletin

Bulletins No. 1, 2 & 3.

Reprinted . . July 1995

Welcome To Gillspeed.

Workshop manuals never seem to tell you all the 'tricks of the trade' that come with experience. That's because most are written when the car first enters production. What you need is a manual written with the benefit of 20 or 30 years experience. That's what Gillspeed Bulletins are all about. Back in 1991, we started to write down answers to common questions and mail them out to our customers.

We are still learning at Gillspeed and so are our customers, so there is plenty of information and tricks of the trade to pass on. If you ever have a problem with your sportscar give us a call on (03) 9568 0688.

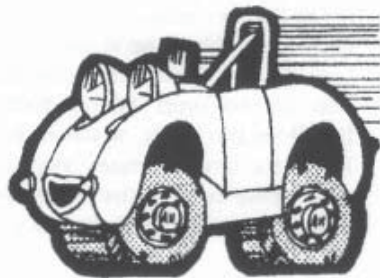
The first three Gillspeed Bulletins were hand written and photocopied. This replacement bulletin contains the same information as the originals, but with a few revisions and omissions to reflect current parts availability.

New Phone/Fax Numbers.

As you probably know, all Australian telephone and Fax numbers will eventually be converted to eight digit numbers. All Melbourne numbers now begin with 9. The rest of the number remains the same, including the (03) STD code. Gillspeed's new numbers are listed at the foot of this page.

Easy Oil Change.

If you have ever tried filling your Sprite or Midget gearbox through the filler plug on the side of the gearbox, you will know how awkward it is to unscrew the filler plug. Pouring the oil through a funnel is messy and refitting



**You Can Have Your Parts
Delivered Same Day In
Melbourne And Overnight
Throughout Australia.**

the filler plug through the inspection hole is almost impossible. The easy way to refill your Sprite or Midget gearbox is via the gearlever hole. Simply remove the gear lever boot and gear lever and slowly pour one litre of SAE 30 engine oil down the hole.

**... if you ever have a
problem with your car
and need parts or advice,
give Gillspeed a call. . .**

NOTE: Do not use heavy gear oils in these gearboxes. The manufacturer recommends SAE 30 Engine Oil.

Over many years, we have noticed that whenever SAE90 gear oil is used, it leaks out the front gearbox cover and ends up on the clutch. Layshaft wear also increases because the SAE 90 oil is too thick to pass through the tiny oil galleries in the layshaft and lubricate the bearings adequately.

NOTE: You cannot fill MGA, MGB or 1500 Midget gearboxes this way.

Lost Your Tail Lenses?

Have you ever found your Sprite, Midget or MGB tail lamp lenses missing? It's an expensive discovery. Some are stolen, but most rattle loose and fall out because the lens to lamp rubber is missing. The red and amber lenses slide together and then clip onto the tail lamp rim. The top of the rim clips over a small tag on the backing plate and is secured by a screw at the bottom. There is supposed to be a thick seating rubber between the lenses and the lamp base to keep the dirt out and to stop the lenses rattling loose. If the seating rubber is missing, or the tag at the top of the backing plate breaks off, you can lose your lenses. If you can rattle your lenses, it's worth investing in some new seating rubbers from Gillspeed. Some owners 'Silastic' the two lenses to the chrome rim for extra security. It's a good idea.

The Handbrake Mistake.

If you fit new rear brake linings and find you are still unable to get a really 'firm' brake pedal, you may need to check your hand brake adjustment as follows:

- ◆ 'Un-adjust' (Loosen off) the handbrake cable adjustment.
- ◆ Tighten both rear wheel brake adjusters until you feel or hear the brake shoes lightly rubbing on the brake drums.
- ◆ 'Re-adjust' (Tighten up) the handbrake cable adjustment.

By following this sequence, you will stop the handbrake cable adjustment overriding the rear wheel adjustment. A 'spongy' brake pedal can also be caused by faults in the hydraulic system or brake drums and linings that are not ground to the same diameter. New linings should always be ground to match the drums. If in doubt, call Gillspeed. PTO

Phone (03) 9568 0688

FAX (03) 9568 0043

The Most Valuable Part Of Your Car May Be It's Numbers.

These days, most motor vehicle registration authorities want to see the actual engine and chassis numbers stamped on the engine or chassis plate when you transfer ownership.

A lost chassis plate can cause you major headaches with the authorities and scare off potential buyers. New chassis plates are available, but few owners have recorded their numbers.

Use This List To Record Yours.

Registration No.....

Make.....

Model.....

Year.....

Chassis No.....

Body No.....

Engine No.....

Paint Colour/Code.....

Commission No.....

Key Numbers

Ignition.....

Doors.....

Boot Lid.....

Tailgate.....

Petrol Cap.....

Steering Lock.....

Wheel Nuts.....

Sound System

Make.....

Model.....

Serial No.....

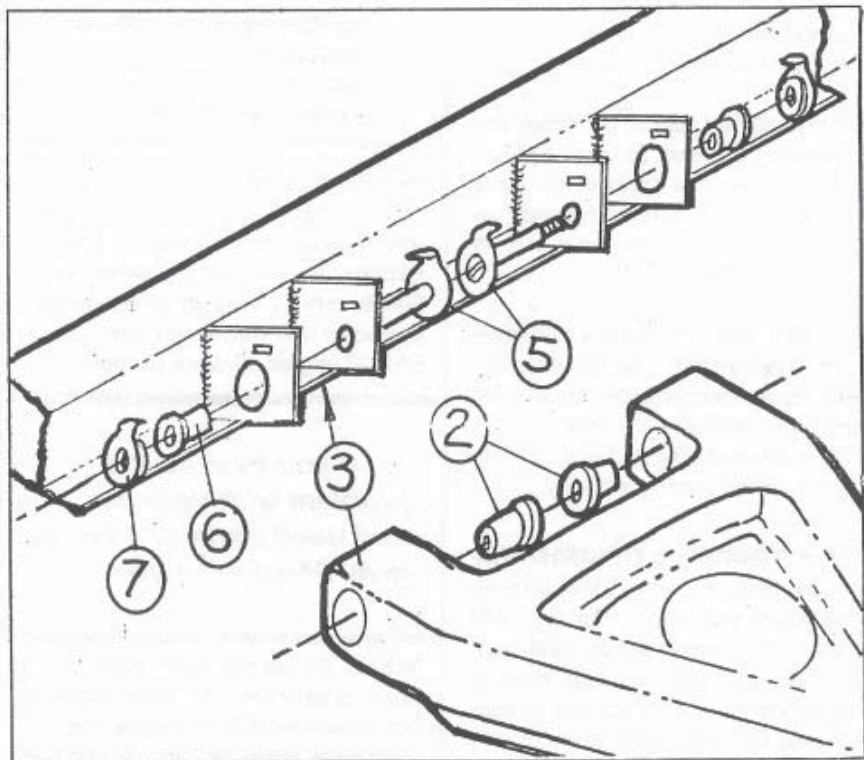
Notes.....

Are Your Wishbones Installed Correctly?

Many Sprites and Midgets are running around with one or more of their wishbone inner fulcrum bolts installed backwards. This can cause changes to the front wheel alignment and expensive damage to the wishbone mounting 'ears' welded to the chassis rails. Camber and castor are not adjustable on Sprites and Midgets, so the location of the wishbone in these ears determines the wheel alignment.

To install your fulcrum bolts correctly, follow these steps:

- 1 Lubricate the wishbone and all the wishbone bushes with rubber grease.
- 2 Install the two 'inner' rubber bushes in the wishbone as shown.
- 3 Offer the wishbone up to the chassis ears.
- 4 Line up the bolt holes in the bushes and the ears.
- 5 Push the two 'inner' fulcrum bolts through the ears into the bushes.
- 6 Install the two 'outer' wishbone bushes through the large holes in the ears.
- 7 Install the large diameter 'stepped' tab washers in the large holes in the ears. Make sure all the 'steps' and tabs engage completely in the ears before tightening up the lock nuts.



Free Catalogue And Bulletins.

This bulletin covers Sprite and Midget topics. Later bulletins cover MGA and MGB topics as well. Gillspeed carries a full range of new Bugeye, later Sprite, Midget and MGB parts in stock.

If you would like free copies of the later Gillspeed Bulletins, a free Sprite / Midget catalogue, additional information, new parts or repairs, give Gillspeed a call on (03) 9568 0688. Ask for Bob, Derek or Sergio.